



📍 8 Castley Road, Hilperton, Trowbridge, Wiltshire, BA14 7RF

🏠 £425,000

An attractive, modern, four bedroom, two bathroom, detached house with private garden, double garage and driveway parking which is situated on a sought after road, forming part of the popular Paxcroft Mead development, close to schools and amenities.

- Well Presented, Detached, Family House
- Four Good Sized Bedrooms
- Bathroom & En Suite Shower Room
- Utility Room & Cloakroom
- Gas Central Heating & UPVC Double Glazing
- Private Rear Garden
- Double Garage & Driveway Parking
- Popular Location
- Close To Schools & Amenities

🏠 Freehold

🏠 EPC Rating C



An attractive, modern, detached house with private garden, double garage and driveway parking which is situated on a sought after road, forming part of the popular Paxcroft Mead development, close to schools and amenities.

This well presented property offers excellent accommodation over two floors comprising; entrance hall, sitting room bay window and plantation shutters, dining room with French doors opening onto the rear garden, kitchen with modern units, utility room, cloakroom, principle bedroom with en suite shower room, three further good sized bedrooms and a bathroom with white suite.

Externally; there is a lawned garden to the front with ornamental bushes to the side. To the rear there is a private, predominately lawned garden with paved patio seating areas, level gravelled area, raised beds and partly enclosed by hedging. Path to the side of the property leading to gated access to the front.

Integral double garage with two up and over door to the front, door to the side, power and lighting. Driveway parking in front for two cars.

Situation

Paxcroft Mead forms part of the popular village of Hilperton which is situated on the outskirts of Trowbridge and offers its own primary school, public house, church, village hall and is close to open countryside walks and the Kennet and Avon canal. The nearby village of Holt, offers further excellent pubs and the National Trust "Court gardens" with areas to relax and walk. Transport links include a regular bus service to Trowbridge where there is a main line train station offering easy access to the Georgian city of Bath (approximately 7 miles) and Bristol Temple Meads (approximately 18 miles).

Property Information

Council Tax Band; E

EPC Rating; C

Freehold

Mains Services

Gas Fired Central Heating & UPVC Double Glazing



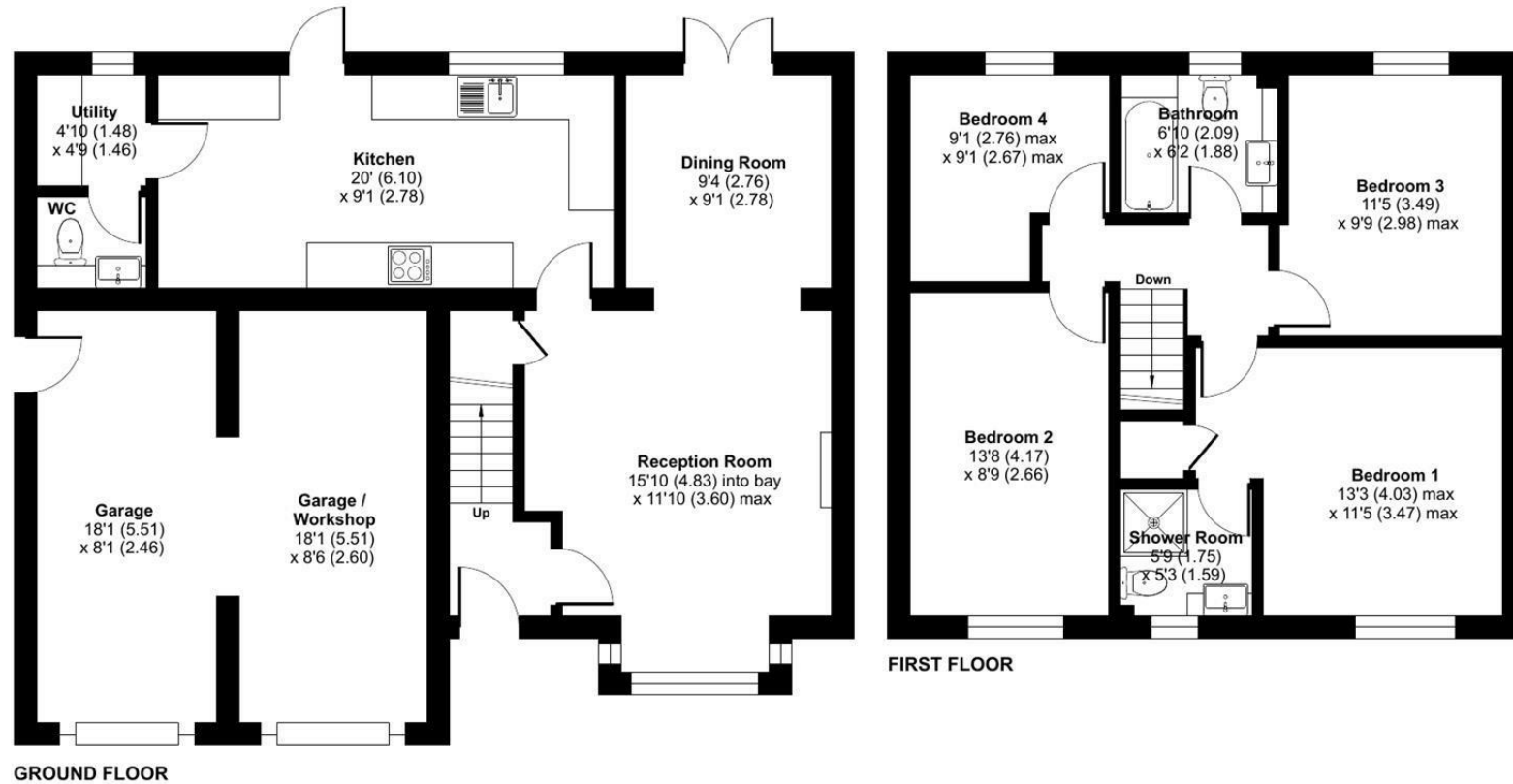
Castley Road, Hilperton, Trowbridge, BA14 7RF

Approximate Area = 1199 sq ft / 111.3 sq m

Garage = 309 sq ft / 28.7 sq m

Total = 1508 sq ft / 140 sq m

For identification only - Not to scale



Floor plan produced in accordance with RICS Property Measurement 2nd Edition, Incorporating International Property Measurement Standards (IPMS2 Residential). © nctechcom 2026. Produced for Strakers. REF: 1466045

Disclaimer These particulars, whilst believed to be accurate are set out as a general outline only for guidance and do not constitute any part of an offer or contract. Intending purchasers should not rely on them as statements of representation of fact, but must satisfy themselves by inspection or otherwise as to their accuracy. No person in this firm's employment has the authority to make or give any representation or warranty in respect of the property. All measurements and distances are approximate only. Your home is at risk if you do not keep up repayments on a mortgage or other loan secured on it.